

Penthouse in Benahavís

Reference: R5429389

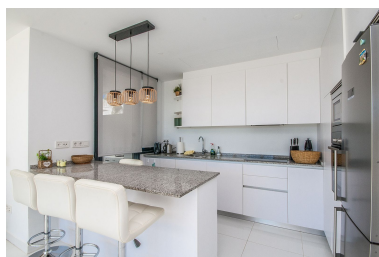
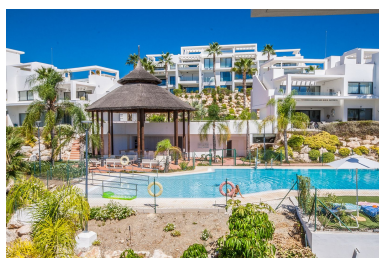


Bedrooms: 3  
Status: Sale

Bathrooms: 2  
Property Type: Penthouse

M<sup>2</sup>: 129  
Parking places: by request

Price: 997,000 €  
Printing day : 3rd July 2026



Overview: Located in the sought-after Atalaya area of Benahavís, just minutes from the picturesque town of San Pedro de Alcántara, this luxury duplex penthouse is built to the highest modern standards and boasts stunning views across the golf course towards the sea. The lower level features a spacious lounge opening onto a large, sunny terrace, a sleek open-plan kitchen with utility area, and three bedrooms – including a master suite with en-suite bathroom and two guest rooms sharing a modern family bathroom. Upstairs, the property impresses with an extraordinarily large roof terrace, offering panoramic vistas of the golf course and the sea to the south side, and serene views over the communal pool to the north. Conveniently positioned within the complex, the penthouse allows for easy access to the pool area directly from the entrance side of the building. Additional features include air conditioning and an underground private parking space, a storage room. This exclusive gated ■community ■boasts ■beautifully ■landscaped ■gardens, a serene outdoor pool, ■indulgent ■sauna and ■steam facilities, ■a traditional hammam, and an ■elegant ■outdoor bar area ■designed ■for ■refined ■leisure ■and ■entertainment.

---

Features: