

Terraced Townhouse in Atalaya

Reference: R5350885



Bedrooms: 3

Bathrooms: 2

M²: 156

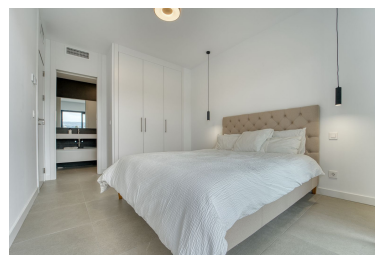
Price: 795,000 €

Status: Sale

Property Type: Terraced
Townhouse

Parking places: by request

Printing day : 7th July 2026



Overview:Townhouse Provence · Contemporary Luxury in Atalaya Golf, Estepona Townhouse Provence is a refined three-bedroom residence set within the prestigious Atalaya Golf area of Estepona, offering a seamless blend of modern design, comfort, and exceptional surroundings. Positioned frontline to the golf course, the property enjoys uninterrupted views over the greens, extending towards the iconic La Concha mountain. The home is thoughtfully designed around open-plan living, where the kitchen, dining, and lounge areas flow effortlessly together, creating a bright and inviting atmosphere. The fully fitted kitchen is finished to a high standard, combining clean lines with functionality, while large openings connect the interior to generous terraces, enhancing the sense of space and indoor-outdoor living. All three bedrooms are well-proportioned and include fitted wardrobes, with each benefiting from its own en-suite bathroom featuring contemporary walk-in showers. The master suite stands out with direct access to a private upper terrace, offering a more secluded space to enjoy the views and surroundings. A guest toilet adds further convenience for visitors. The property has been finished with a modern aesthetic throughout, incorporating high-quality materials and a smart home system that enhances both comfort and efficiency. Expansive covered and open terraces provide multiple areas for relaxing or entertaining, all while overlooking the golf course. Located in one of Estepona's most established and desirable golf communities, Townhouse Provence offers a calm residential setting with easy access to nearby ■amenities, ■beaches, ■and ■key ■destinations along the Costa del ■Sol. ■This is ■a property ■that combines contemporary architecture with ■a ■privileged location, ideal ■for ■both ■permanent ■living ■and ■investment.

Features:

None, Golf, None, Town, Air conditioning, Mountain views, None, Parking