

Penthouse in Benahavís

Reference: R5251159

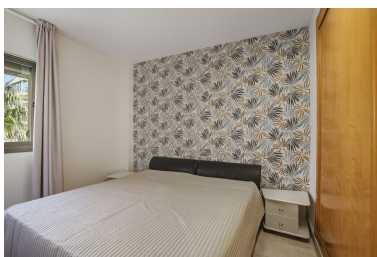
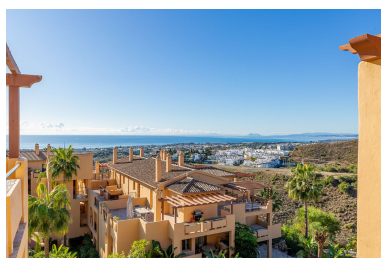


Bedrooms: 2
Status: Sale

Bathrooms: 2
Property Type: Penthouse

M²: 118
Parking places: by request

Price: 630,000 €
Printing day : 10th July 2026



Overview: Stunning South-Facing Corner Penthouse with Panoramic Sea & Mountain Views This exceptional 2-bedroom, 2-bathroom corner penthouse is located in the sought-after gated community of La Hacienda del Señorío de Cifuentes in Benahavís. Perfectly south-facing and elevated, it offers breathtaking panoramic views of the Mediterranean Sea, Gibraltar, the African coastline, and the surrounding mountains. Designed for maximum enjoyment of the Andalusian climate, this property boasts sun all day and features two spacious terraces—ideal for outdoor dining, relaxing, and taking in the spectacular sunsets. Inside, the apartment is bright and airy, with a generous living area that flows seamlessly onto the main terrace. The kitchen is fully equipped, and both bedrooms enjoy natural light and privacy. The master suite includes an en-suite bathroom and direct access to the terrace offering stunning views. Situated in one of Benahavís' most prestigious communities, residents benefit from landscaped gardens, multiple swimming pools (one of which is heated), gym, 24h security, concierge, and close proximity to golf courses, supermarkets, schools, and the beaches of Marbella and Estepona. A rare opportunity to own one of the best-positioned penthouses in this highly desirable development.

Features:

Pool, Air conditioning, Sea views, Mountain views, Garden, Lift, None, 24H Security, Parking, Luxury, Resale